



SILC is a non-profit-making voluntary sector organisation run by and for disabled people. It is primarily funded by Surrey County Council and works closely with the Council.

SILC helps parents and carers of children with disabilities and others who use or want to use Direct Payments, to live independently and to arrange the support and services they require.

To find out more visit:  
**[www.surreyilc.org.uk](http://www.surreyilc.org.uk)**  
or phone:  
**01483 458111**



Social Information on Disability

SID is an independent voluntary sector organisation, which aims to support disabled individuals and their families to make informed life choices.

To find clubs, activities and short breaks for disabled children and young people in Surrey, visit:

**[www.asksid.org.uk/fab](http://www.asksid.org.uk/fab)**

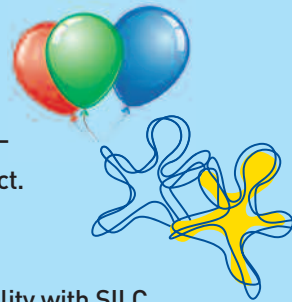
or phone:

**0800 0439395**

This leaflet is funded by  
Aiming High as part of the FAB—  
Family Activities & Breaks project.

The contents are produced by -  
SID Social Information on Disability with SILC  
Surrey Independent Living Council

Social information on Disability is a registered charity no 1110708  
and a company limited by guarantee



# Direct Payments

for disabled children and  
young people in Surrey



Family Activities & Breaks

**[www.asksid.org.uk/fab](http://www.asksid.org.uk/fab)**

Spring 2011

## What are Direct Payments?

Direct payments can be used by a person with parental responsibility for a disabled child, to pay for social care services in place of those being provided by Surrey County Council.

### What's the benefit?

You can use direct payments to -

- Employ an overnight or day carer
- Employ someone to support your child attend a local club (not Council run)
- Pay for an after school club, residential short break, nursery placement etc
- Purchase or hire equipment needed by your child

## Making an Application

Surrey County Council decide whether a child is eligible to receive a service by carrying out an assessment of the needs of the child and their family.



If your child is not currently receiving social care support from Surrey County Council, you will need to call **03456 009 009** to ask about the Direct Payments process.

If your child is already receiving social care support from Surrey County Council, contact your care coordinator (who may also be called your care manager or social worker) to discuss using direct payments for your child.

## Using Direct Payments

### Jack's story

Jack is 14, lives with his family and goes to residential special school. He communicates by body language and has clear ways of saying Yes and No.

During the school holidays his parents use a Direct Payment to employ a personal assistant called Mark who is very skilled at understanding Jack's communication.

Through Mark's assistance, Jack has been able to develop his interest in digital art, attend mainstream summer clubs and make new friends in his local area.

